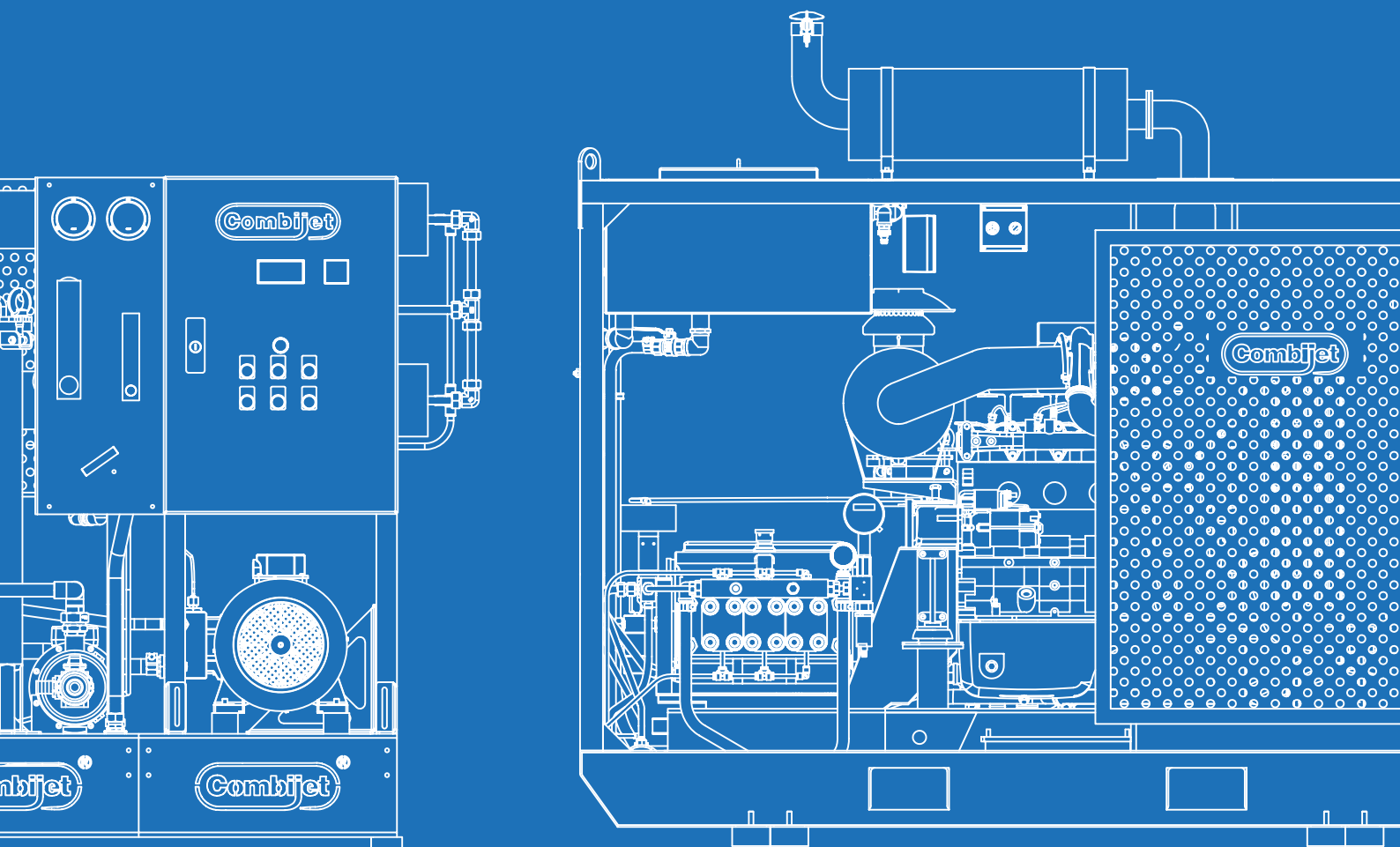




HIGH PRESSURE WATER JETTING EQUIPMENT



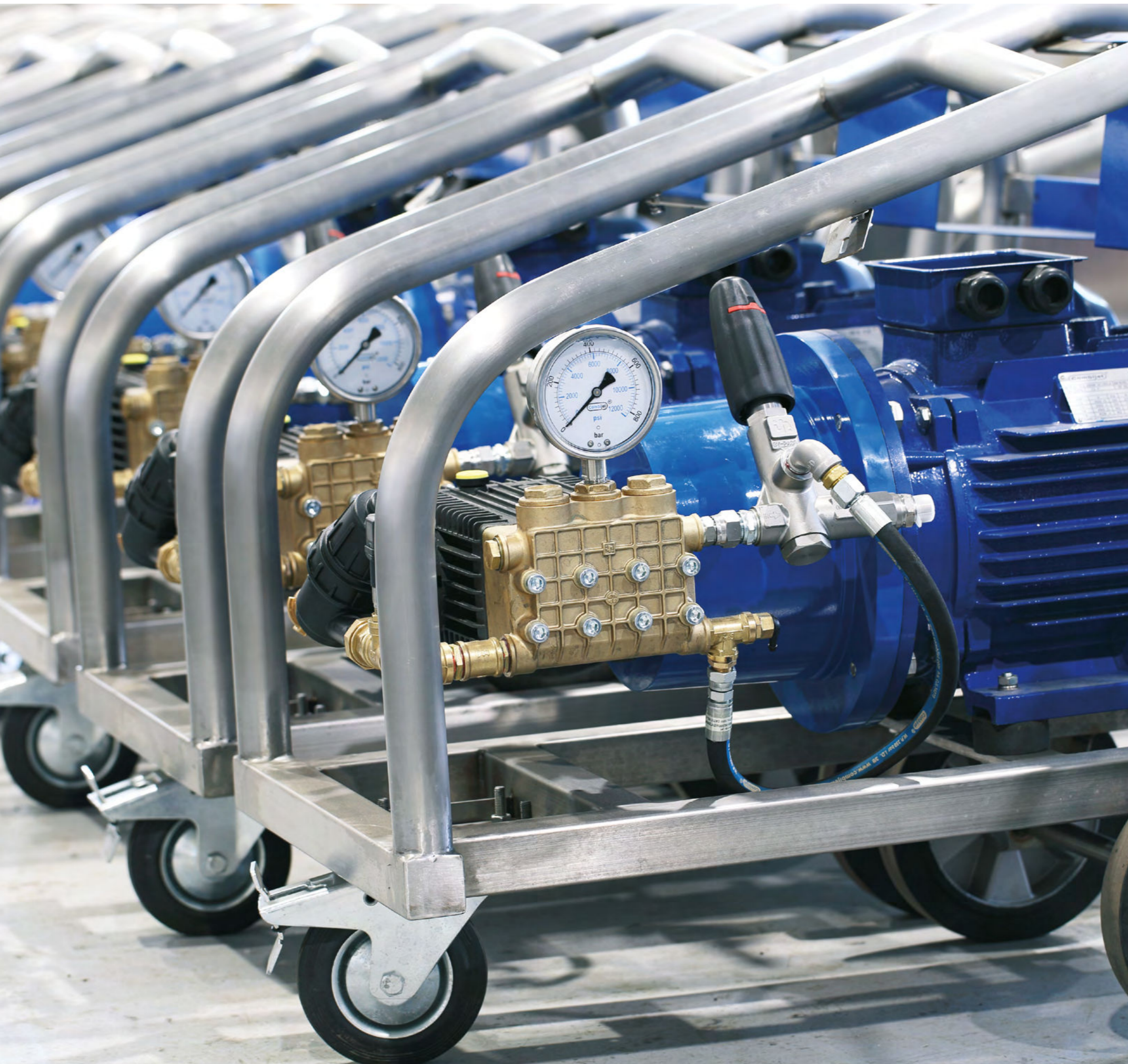


**HIGH PRESSURE WATER
JETTING EQUIPMENT**



CONTENTS

	About COMBIJET	7
	Global Locations	10
	Sectors and Applications	
	Seagoing & Offshore Vessels	12
	Shipyards & Dry-docks	13
	Construction	14
	Heavy Industry	15
350 bar	Water-jetting systems and accessories up to 350 bar (up to 5,000 PSI)	17
500 bar	Water-jetting systems and accessories up to 500 bar (up to 7,250 PSI)	25
1000 bar	Water-jetting systems and accessories up to 1000 bar (up to 15,000 PSI)	35
1500 bar	Water-jetting systems and accessories up to 1500 bar (up to 22,000 PSI)	43
2800 bar	Water-jetting systems and accessories up to 2800 bar (up to 40,000 PSI)	51
ATEX	59Intrinsically Safe (Explosion Proof / ATEX compliant) 200 bar up to 2800 bar (2,900 PSI up to 40,000 PSI) 	59
ROBOTS	XW 100 High Pressure Washing / Cargo Hold Cleaning Robot	63
	XJ 300 / XV 300 Ultra High Pressure Water Blasting Robots	65
RO	Modular Reverse Osmosis (Watermaker) Systems	67
HOSES	Ultra High Pressure Thermoplastic Hoses	71
PPE	Personal Protective Equipment	73
	Tailor-made Solutions	77
	Hydroblasting Services	79
	Vacuum Cleaners Foam Sprayer	80
	Steam Generators	81



A leader in water jetting technology

COMBIJET is a manufacturer and supplier of high pressure water jetting equipment, reverse osmosis systems and industrial cleaning machinery.

Backed by high-end components, thorough engineering and European build quality, our products serve a wide spectrum of industries globally.

Whether it is marine, oil & gas, construction or heavy-industry applications, professionals trust in our products to carry out their projects cost-effectively and reliably.

Our range covers an array of products for the most demanding environments, including pressure washers (from 150 bar up to 250 bar), Jet Cleaners (up to 500 bar) and Ultra High Pressure Water Blasters (from 800 bar up to 2800 bar).

With a full range of tools and accessories, engineered and manufactured for high pressure ratings, we deliver to the end-user a complete solution for most projects or applications.

As a highlight of the range, we offer the innovative COMBIJET Robots, suitable for high pressure cleaning and blasting of steel surfaces and structures.

COMBIJET produces a line-up of reverse osmosis systems (water-makers), for water treatment applications. The modular construction, small footprint and low-consumables make these systems ideal for challenging installations, such as marine and offshore vessels.

Additionally, we offer worldwide hydro blasting services, where our specialized equipment and experienced teams travel to carry out projects on site.

Utilizing our expertise and know-how, we can meet any design specifications for tailor-made solutions.



Always next to our customers

At COMBIJET, we strongly believe in our goal: Customer Success.

To achieve this, we have set as an organization core promises:

RELIABILITY

Our equipment and tools have been developed for the most demanding environments. We understand how critical it is for machinery to operate reliably, in order to deliver projects successfully.

SAFETY

Operator safety is foremost. All our equipment and accessories are designed, engineered and thoroughly tested to ensure that the user, work-site and environment are safe.

INNOVATION

Through our own R&D division, we are continuously working on new innovations, as well as enhancing our existing products, to ensure that the end-user is receiving the ultimate and most effective solution for the application.

COST EFFECTIVENESS

We strongly understand that for any operation or project to be successful, the commercial aspect has to be successful.

Therefore, we always strive to offer our customers cost-effective solutions, assisting them to achieve their targets within their budgets, without compromising quality

Global Presence and Service throughout the World

Through our worldwide network of stocking points, we ensure that you can obtain all your high-pressure jetting equipment, accessories and spare parts from convenient location at all times.

Our current stocking points:

- Cyprus (Headquarters and Manufacturing)
- Singapore
- Antwerp, Belgium
- Dubai, UAE
- Houston/New Orleans, USA

COMBIJET presence at major International Exhibitions



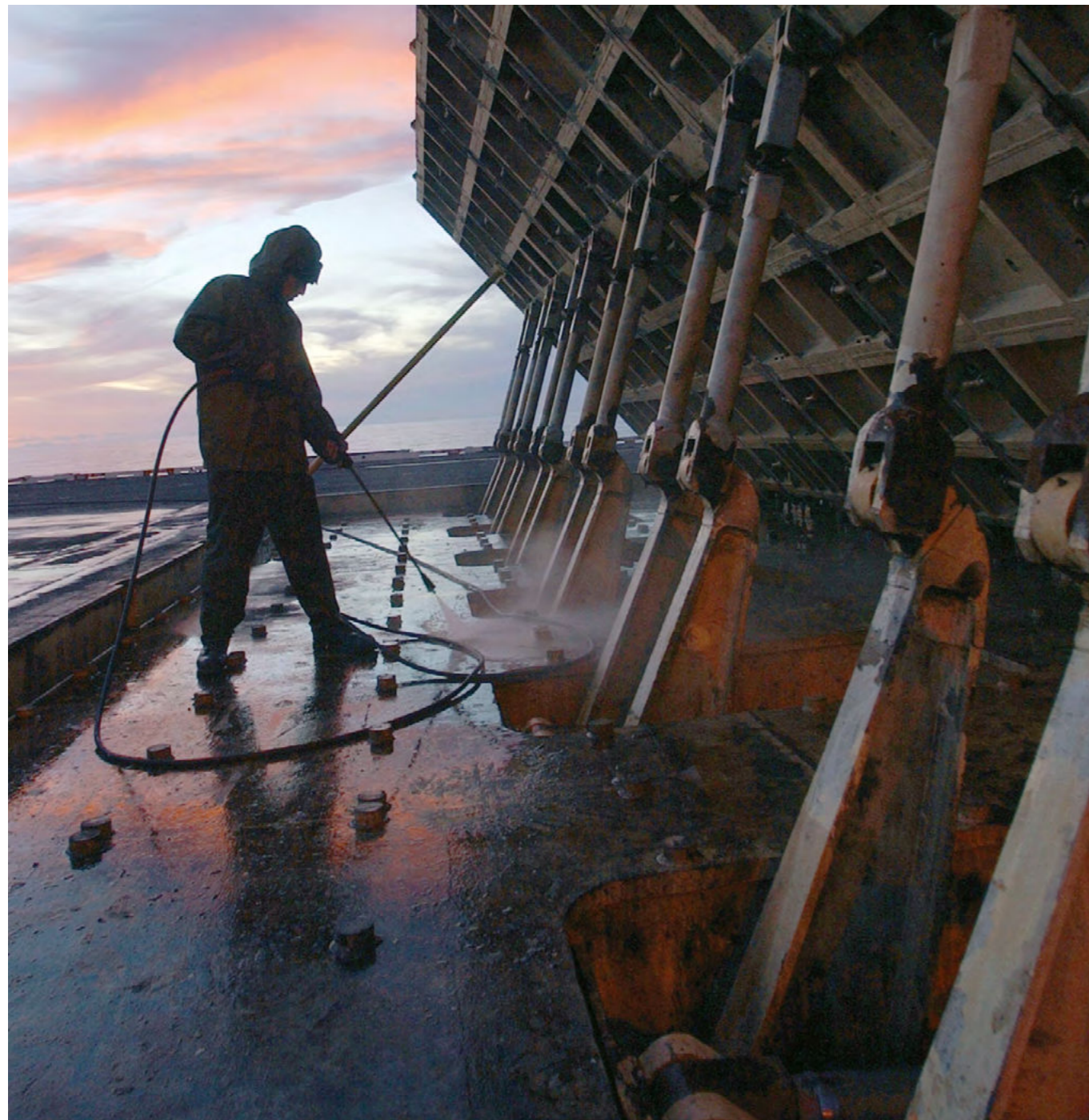
COMBIJET for Seagoing & Offshore Vessels

The marine industry is vital for international trade, as over 80% of shipping is carried out by sea transport.

Seagoing vessels and structures need to be maintained to increase efficiency and reduce downtime.

COMBIJET provides a full range of high pressure water jetting equipment, specifically designed for the marine sector. Whether it is pressure washing, cargo hold cleaning or paint & rust removal, our equipment are the perfect solution for keeping vessels in optimal condition.

Additionally, our reverse osmosis systems, that run independent of the main engine, provide fresh water to the vessel, for accommodation, washing and boilers.



COMBIJET for Shipyards & Dry-docks

Shipyards are the backbone of the marine industry, as vessels and offshore structures need to be maintained on a regular basis to operate safely and effectively.

That's where COMBIJET equipment come in, providing a multitude of solutions for the industry.

Starting with pressure washing of vessels, to remove salts, barnacles and sea growth, and then carrying out structural inspections, our high pressure cleaners and tools are designed to facilitate the cleaning operation.

During most dry docking projects, surface maintenance is required to remove the existing paint and corrosion, and prepare the surface for the application of new coatings.

COMBIJET ultra high pressure water blasters enable shipyards to carry out paint stripping and surface preparation, with the use of effective tools and innovative solutions, such as the COMBIJET cleaning and hydroblasting robots, to deliver projects effectively with a quick turnaround.

COMBIJET for construction

The construction industry relies heavily on water jetting equipment in everyday operations.

Whether it's cleaning of construction equipment, maintenance of steel structures, removal of concrete from scaffolding and formwork, concrete renovation and roughening or hydro-demolition, high pressure machines are essential for every job site or development project. That is why at COMBIJET, we are focused on supporting the construction and development industries, with a comprehensive range of equipment and accessories, enabling operators and service providers to tackle all challenges, with reliable, safe and economical solutions.



COMBIJET for heavy industry

From factories, mills, foundries, to processing, chemical and power plants, heavy industries form the cornerstone of all industries, commerce and everyday life.

Running such facilities involves critical components that are vital to the operation, while at the same time requiring regular maintenance and servicing.

COMBIJET equipment and tools are used daily in numerous heavy industry applications, such as surface cleaning and blasting, pipe, tube and heat exchanger servicing and storage tanks & silos washing & surface maintenance.

The ease of use, high productivity and minimum downtime ensure that shutdown operations are done effectively and on time.

Water-jetting systems up to 350 bar (up to 5,000 PSI)

The pressure range up to 350 bar includes a wide selection of models with Electric, Diesel, Petrol and Pneumatic drives, as well as Hot & Cold pressure washers. Compact units, designed for heavy duty work for many applications, COMBIJET is the choice to go for when reliability is key.

ELECTRIC Cold Water

Max. Pressure	140 Bar / 2030 PSI
Max. Flow Rate	7 LPM / 1.85 GPM
Electric Motor	2.1 Kw / 2.92 HP
Power Supply	1 phase 230V 50Hz
Machine Dimensions	37x37x62 cm
Machine Weight	18.5 Kg / 40.8 lbs

Standard Equipment

- Low maintenance motor, three steel pistons, aluminium pump head, with built-in bypass valve
- Automatic stop system
- Built-in detergent tank for direct suction
- Trolley with ergonomic handle and accessory holder
- Cable holder
- Side holder for gun and lance
- Hose-reel
- High pressure hose - 6m
- Gun and lance (fan jet and turbo)
- Operator and spares manual



ELECTRIC Cold Water

Standard Equipment

- Gun with Rotating Coupling
- Lance with Fan Jet Nozzle
- Power Cable 5m
- High Pressure Hose 8m
- Three ceramic pistons, brass linear pump head with built-in by-pass valve.



Operat. pressure/max	30-150 Bar (max 160 Bar)
Delivery Rate	5.79 - 9 l/min
Delivery Rate	1.52 - 2.38 GPM
Abs. Power/Voltage	3000 W / 230V - 50Hz 1 ph
RPM	1450
Detergent Tank	3.8L / 1 gal
Inlet max. Temperature	40° C
Machine Dimension / Weight	76x41x75 cm / 33 Kg / 72.6 lbs

JE10-1510

JE10-2015

30- 200 Bar (max 160 Bar)
7.5 -15 l/min
1.98 - 3.96 GPM
7000 W / 400V - 50Hz 3 ph
1450
3.8l / 1 gal
40° C
76x41x75 cm / 44 Kg / 96.8 lbs

ELECTRIC Cold Water

HEAVY DUTY RANGE

Key Features

- Water-cooled motor - keeps the motor at optimum temperatures
- Total Stop (Delayed) - shuts down the motor when pump is not in use, with a 15 second delay, protecting the unit from overheating
- Flexible coupling between motor and pump - increased lifetime of motorpump

Standard Equipment

- Gun with Rotating Coupling
- Lance with Fan Jet Nozzle
- Power Cable 5m
- High Pressure Hose 10m



Operating Pressure (bar)
Operating Pressure (psi)
Flow Rate
Power/Voltage
Motor Pump Type
RPM
Inlet max. Temperature
Machine Dimension
Machine Weight

JE20-1211

30-125 Bar
435 - 1812 psi
5.75 - 11 lpm / 1.52 - 2.91 GPM
3000 W / 230V - 50Hz 1 ph
MP3
1450
40° C
50x90x83 cm
44 Kg / 96.8 lbs

JE20-2015

30-200 Bar
435 - 2900 psi
7.5 - 15 lpm / 1.52 - 3.96 GPM
7000 W / 400V - 50Hz 3 ph
MPW5
1450
40 ° C
50x90x83 cm
47.5 Kg / 104.5 lbs

ELECTRIC Cold Water

Hot Inlet Water

The high pressure can with stand hot water inlet, up to 85 deg C



Working Pressure
Flow Rate
Electric Power
Power Supply
Dimensions
Weight

JE20-160/20HT

160 Bar /2.320 PSI
19 lpm / 5.0 GPM
7.5 kW / 10 HP
3 phase 440V 60 Hz
800 x 600 x 600 mm
90 Kg

JE20-200/18HT

200 Bar / 2.900 PSI
18 lpm / 4.75 GPM
7.5W / 10 HP
3 phase 440V 60 Hz
825 x 625 x 625 mm
105 Kg

ELECTRIC Cold Water

Standard Equipment

- 10m High Pressure Rubber Hose
- 5 m Oil Resistant Electrical Cable
- Trigger Operated Gun c/w Lance
- Fan Jet Nozzle
- One set of Operator & Spares Manual

Standard Features

- Lifting Eye
- Solid Wheels
- Brake System
- Unloader Valve



Operating Pressure (bar)
Operating Pressure (psi)
Flow Rate
Power/Voltage
Motor Pump Type
RPM
Inlet max. Temperature
Machine Dimension
Machine Weight

JE20-2018

30-200 Bar
435 - 2900 psi
9 - 18 lpm / 2.38 GPM
8400 W / 380V - 60Hz 3 ph
MPW5
1700
40 ° C
50x60x107 cm
53 Kg / 117 lbs

JE20-2513

30 - 250 Bar
435 - 3600 PSI
7.5 - 13 lpm / 1.98 - 3.44 GPM
8700 kW / 380V 60Hz 3 ph
MPW5
1700
40 ° C
50x60x107 cm
56 Kg / 123 lbs

Working Pressure
Flow Rate
Voltage / Phase
Electrical Motor
Amperage
Dimensions
Weight

JE60-350 / 50Hz

350 Bar / 5075 PSI
18 lpm / 4.7 GPM
380-400V / 3 ph
14.75 hp / 11 kW
14.43
100x66x92
140 Kg

JE60-350 / 60Hz

350 Bar / 5075 PSI
22 lpm / 5.8 GPM
400 - 440 V / 3 ph
14.75 hp / 11 kW
14.43
100x66x92
140 Kg

DIESEL

Standard Equipment

- Trigger Operated Gun with Lance
- Fan Jet Nozzle (JP13-250)
- High Pressure Hose - 10 m



JD90-275

Working Pressure
Flow Rate
Engine Type
Engine Power
Dimensions
Weight

275 bar / 3.990 PSI
13 lpm / 3.43 GPM
LOCIN
7.5 kW / 3600 RPM
900 x 700 x 850 mm
85 Kg



JD90-350/27

350 bar / 5.075 PSI
27 lpm / 7.03 GPM
KUBOTA
20.5 kW / 1720 RPM
1200 x 800 x 1050 mm
575 Kg

PNEUMATIC / AIR DRIVEN



JA20-275

Working Pressure
Flow Rate
Power
Air Supply
Dimensions
Weight

275 Bar / 4.000 PSI
12 lpm/ 3.2 GPM
9.5 kW / 13 HP
5 Bar / 120-140 l/sec
650 x 460 x 610 mm
85 Kg



JA20 - 300/21

300 Bar / 4.350 PSI
21 lpm / 5.54 GPM
13 kW /17.50 HP
7 Bar / 320 l/sec
800 x 600 x 700 mm
110 Kg

PETROL

Standard Equipment

- Trigger Operated Gun with Lance
- High Pressure Nozzle Set (JP9-200)
- Fan Jet Nozzle
- High Pressure Hose - 10 m



JP9-200

Operating Pressure
Delivery Rate
Engine Power
Pump Type
RPM
Inlet Max. Water Temperature
Dimensions / Weight

200 Bar / 2900PSI
13 lpm / 3.43 GPM
9 hp
TPBH5
3400
40° C
103x50x67 cm / 45 Kg



JP13-250

250 Bar / 3625 PSI
17 lpm / 4.49 GPM
13 hp
CL5
1700
40 ° C
100x66x92 cm / 61 Kg

Highlights



ELECTRIC Hot & Cold Water

Standard Equipment

- Gun with Rotating Coupling
- Lance with Fan Jet Nozzle
- Power Cable 5m
- High Pressure Hose 10m



JE30-1310D



JE30-1211

Operating Pressure/Mx	
Operating Pressure/Max.	
Flow Rate	
Power/Voltage	
RPM	
Diesel Tank	
Detergent Tank	
Max. Temperature Inlet / Outlet	
Fuel Consumption	
Heat Output	
Machine Dimensions / Weight	

30-130 Bar (max 150 bar)
435-1885 PSI (2175 max PSI)
5.5-11 lpm / 1.45 - 2.64 GPM
3000 W / 230V 50Hz 1 ph
2800
14 l / 3.7 gal
2.5 l/0.66 gal
40° C / 90° C
2.83 l/h - 0.75 gal/h
38 kw
80x55x83 cm / 54 Kg / 1212 lbs

30-110 Bar / 150 Bar
4.35-1595 PSI /2175 PSI
5.75-11 lpm / 1.52 - 2.91 GPM
3000 W / 230 V 50Hz 1 ph
1450
18 l/ 4.8 gal
3.0 l / 0.79 gal
40° C / 140° C
4.72 l/h - 1.25 gal/h
58kw
94x65x90 cm / 125 Kg /275 lbs

JE30-2016

Operating Pressure/Mx	
Operating Pressure/Max.	
Flow Rate	
Power/Voltage	
RPM	
Diesel Tank	
Detergent Tank	
Max. Temperature Inlet / Outlet	
Fuel Consumption	
Heat Output	
Machine Dimensions / Weight	

30-200 Bar
435-2900 PSI
7.5-15 lpm / 1.98 - 3.96 GPM
7300 W / 400 V 50Hz 3 ph
1450
18 l/ 4.8 gal/h
3l/0.8 gal/h
40° C / 140° C
6.6 l/h (1.75 gal/h)
74 kw
94x65x90 cm / 130 Kg / 284 lbs

JE30-2018

30-200 Bar
435-2900 PSI
9 18 lpm / 4.78 - 9.56 GPM
8700 W / 380 V 60Hz 3 ph
1700
22 l/5.8 gal
22l/5.8 gal
40° C / 140° C
6.6 l/h (1.75 gal/h)
88 kw
125x69x87 cm / 175 Kg / 385 lbs

ACCESSORIES

COMBIJET® High Pressure Hose - 350bar

Standard lengths 10m and 20m



Fan Jet Nozzle (For cleaning)



Rotating Nozzle



Dry Shut Gun + Lance



Wet Sandblasting Kit



Telescopic Lance

5 to 15 meters extension height
Extension poles, made of fiberglass or carbon fiber
Ideal for reaching and cleaning high areas



Inlet Water Supply Hose – 25m length



Repair Kits

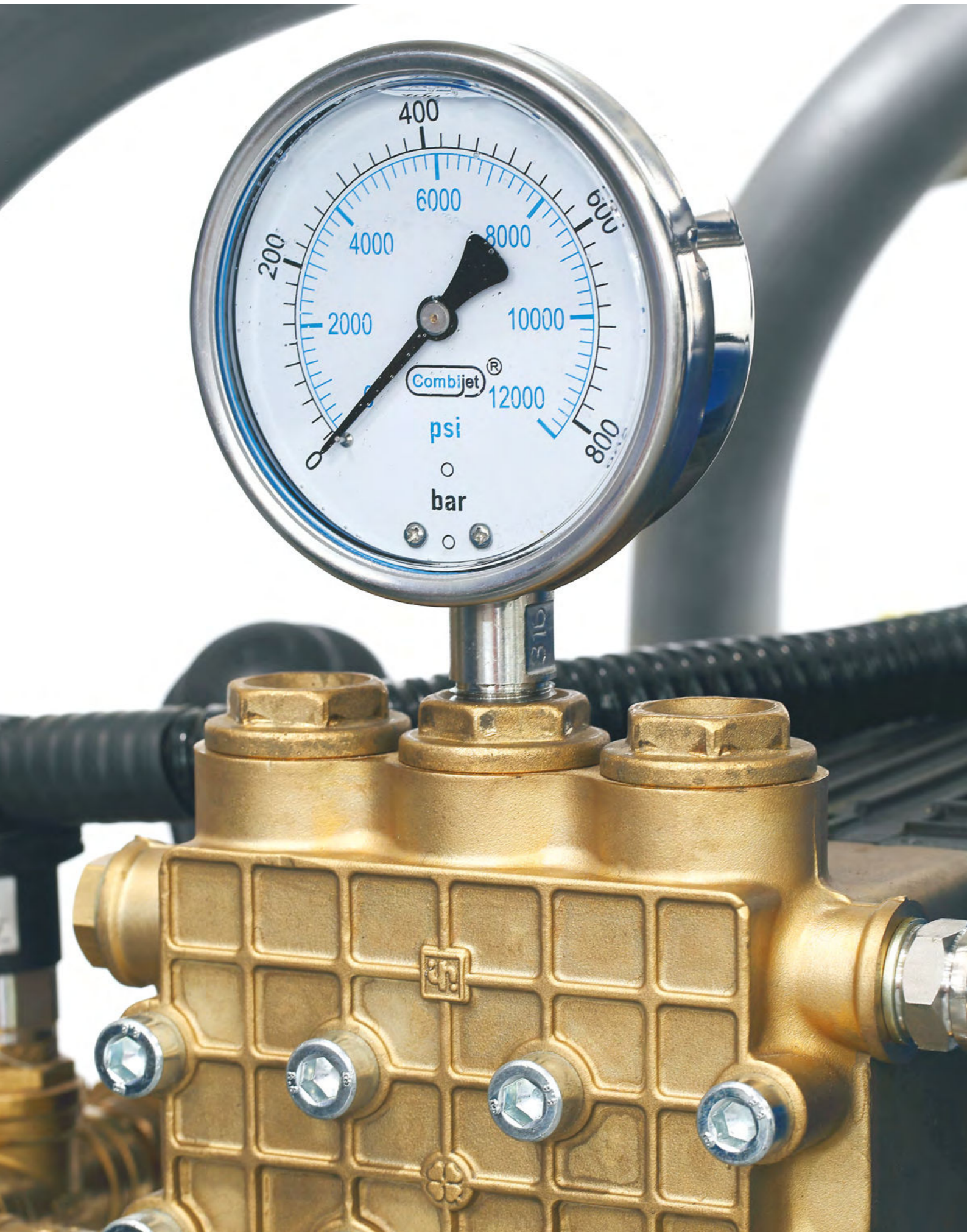
for Rotating Nozzle / Pump Valves /
Water Seals / Oil Seals



Pipe Cleaning Nozzles

For cleaning the inside of pipes internally
Various sizes for various pipe diameters





Water-jetting systems up to 500 bar (up to 7,250 PSI)

Our 500 bar class of machines includes an impressive range of heavy duty jet cleaners, with unparalleled versatility & suitable for many applications.

Powerful, robust and reliable, the 500 bar is the ultimate choice for the most demanding jobs.

Electric or Diesel engine drive, the machines can be offered in various mounting options and a range of accessories.

Highlights



ELECTRIC

Compact 500 bar Jet Cleaner
with Manual Pressure Regulator

Standard Equipment

- Electric Cable -10 m
- High Pressure Hose – 20m
- Trigger Operated Gun with Lance
- Fan Jet Nozzle
- Manual Pressure Regulator
(for pressure adjustment)
- Thermo – Mechanical Valve
(for overheating protection)

Key Features

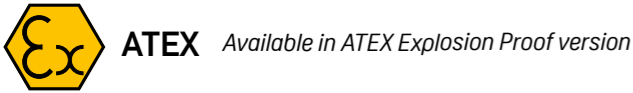
- EU Component & Build Quality
- Electric Box & Hour meter
- Lifting Bar
- Easy Hand Adjustable
Pressure Regulator



JE60-500 / 50Hz & 60Hz

Working Pressure	500 Bar / 7250 PSI
Flow Rate (@50Hz)	16 lpm / 4.2 GPM
Flow Rate (@60Hz)	19 lpm / 5.0 GPM
Voltage / Frequency	400-440V / 50-60Hz
Electric Power	20 hp / 15 kW
Running Current	28 A
Dimension LxWxH	1070 x 550 x 900 mm
Weight	245 Kg

Ideal For Marine Industry, Concrete & Cement Industry, Machinery & Industrial Sector, Removal of Dirt, Grime & Loose Paint



Highlights



KEY FEATURES



Inlet Pressure Sensor
[Dry run protection]

Robust Stainless
Steel Frame AISI 316

Slim Chassis
Width 550mm

Front castor wheel
with Brake

Washable Water Filter



Convenient Lifting Bar



Fully Enclosed Bell-housing
+ Flexible Coupling



Hand adjustable Pressure
Regulator [150 500 bar]



Control Panel (IP65)
with Hourmeter

Star Delta (Y Δ)
starting system

Dual Frequency
50hz & 60hz

Thermal Valve
(Overheat protection)

Solid rear wheels
with aluminum hub

ELECTRIC

Dual Pump High Pressure Jet Cleaner

Designed for dual operator use, this model has two pumps running off a single electric motor

Standard Equipment

- 2 x Combijet® HP Hose 20m with female ends BSP ½”
- 2 x Gun: Trigger operated gun
- 2 x Lance: 800mm length
- 2 x Nozzle: Fan Jet nozzle



JE80-500D / 50Hz

JE80-500D / 60Hz

Working Pressure	500 Bar / 7250 PSI
Flow Rate	2 x 16 lpm / 2 x 4.2 GPM
Voltage/Frequency	400V / 50Hz
Electric Power	30 kW / 40 HP
Dimension LxWxH	1600 x 900 x 1400 mm
Weight	600 Kg

Working Pressure	500 Bar / 7250 PSI
Flow Rate	2 x 19 lpm / 2 x 5 GPM
Voltage/Frequency	440V / 60Hz
Electric Power	30 kW / 40 HP
Dimension LxWxH	1600 x 900 x 1400 mm
Weight	600 Kg

Highlights



ELECTRIC

High Flow High Pressure Jet Cleaners

Standard Equipment

- Combijet HP Hose 20m with female ends BSP ½”
- Gun with Lance



JE80-500/30

JE80-500/40

Working Pressure
Flow Rate
Voltage/Phase
Electric Power
Dimension LxWxH
Weight

500 Bar / 7250 PSI
30 lpm / 7.9 GPM
400V / 50 Hz or 440V / 60Hz
30 kW / 40 HP
1500 x 750 x 1000 mm
450 Kg

500 Bar / 7250 PSI
40 lpm / 10.5 GPM
400V 50Hz / 440V 60Hz
30 kW / 40 HP
1600 x 1000 x 1200 mm
650 kg

JE80-500/55

JE80-500/75

Working Pressure
Flow Rate
Voltage/Phase
Electric Power
Dimension LxWxH
Weight

500 bar / 7,250 PSI
55 lpm / 14.5 GPM
400V 50Hz or 440V 60Hz
55 kW / 75 HP
2000 x 1750 x 1800 mm
1600 kg

500 bar / 7,250 PSI
75 lpm / 20 GPM
75 kW / 100 HP
2000 x 1750 x 1800 mm
1800 kg



DIESEL

High Pressure Water Jet Cleaner

Standard Equipment

- 20m High Pressure Hose
- Trigger Operated Gun with Lance
- Fan Jet Nozzle
- Manual Pressure Regulator

Standard Features

- Base and Frame
- Water Tank
- Lifting Eye
- Stainless Steel Filters



JD90-500

JD90-500/30

Working Pressure	500 Bar / 7250 PSI
Flow Rate	18 lpm / 4.75 GPM
Engine Power	20 kW / 27 HP
Dimension	1200 x 800 x 1050 mm
Weight	450 Kg

Working Pressure	500 Bar / 7250 PSI
Flow Rate	30 lpm / 7.9 GPM
Engine Power	40kW / 55 HP
Dimension	2100 x 1100 x 1750 mm
Weight	1050 kg

Working Pressure	500 bar / 7250 PSI
Flow Rate	40 lpm / 10.5 GPM
Engine Power	50-55 kW / 65-75 HP
Dimension	2100 x 1100 x 1750 mm
Weight	1050 kg

JD90-500/40

JD90-500/55

Working Pressure	500 bar / 7,250 PSI
Flow Rate	55 lpm / 14.5 GPM
Engine Power	65-75kW / 85-100 HP
Dimension	2250 x 1750 x 1800 mm
Weight	1750 kg

Working Pressure	500 bar / 7,250 PSI
Flow Rate	55 lpm / 14.5 GPM
Engine Power	65-75kW / 85-100 HP
Dimension	2250 x 1750 x 1800 mm
Weight	1750 kg

JD90-500/75

Working Pressure	500 bar / 7,250 PSI
Flow Rate	75 lpm / 20 GPM
Engine Power	90-100 kW / 120-135 HP
Dimension	2250 x 1750 x 1900 mm
Weight	2300 kg

Highlights



MOUNTING OPTIONS

- Soundproof / Weatherproof Enclosure
- Mobile Trailer on Wheels
- Container Setup (10ft / 20ft)



ACCESSORIES

COMBIJET® High Pressure Hose - 500 Bar
Standard length 20m, other lengths available on request



Dry Shut Gun + Lance 800mm - 500 bar



Fan Straight Jet Nozzle (For cleaning)



Straight Jet (0°) Nozzle (For cutting)



Rotating Nozzle - 500 bar

*Stainless steel body - Ceramic rotor
Ideal for heavy cleaning or removal of loose paint/rust flakes*



Wet Sandblasting Kit - 500 Bar

The kit mixes the high pressure water with the abrasive/sand. Ideal for removal of paint and rust, back to bare metal



Pipe Cleaning Nozzles

*For cleaning the inside of pipes internally
Various sizes for various pipe diameters*



Foot Valve

*For control of pressure on/off using the foot
Typically used during pipe and tube cleaning*



Telescopic Lance

*5 to 15 meters extension height
Extension poles, made of fiberglass or carbon fiber
Ideal for reaching and cleaning high areas*



ACCESSORIES

Surface Cleaner

*For high pressure cleaning of floors and decks
The setup is on wheels, where the operator navigates the tool over the surface, while arming/disarming the pressure by hand
The cleaning is done by a rotating nozzle holder, enclosed within the body of the tool*



Lance 500 bar

400mm length (for confined spaces)



Lance 500 bar

1200mm length (for further reach)



Inlet Water Supply Hose – 25m length



Two Stage Filtration System (30µ/5µ)

*For additional filtration of water feed to the machine
The filter unit consists of a 30 micron 1st stage and a 5 micron 2nd stage*



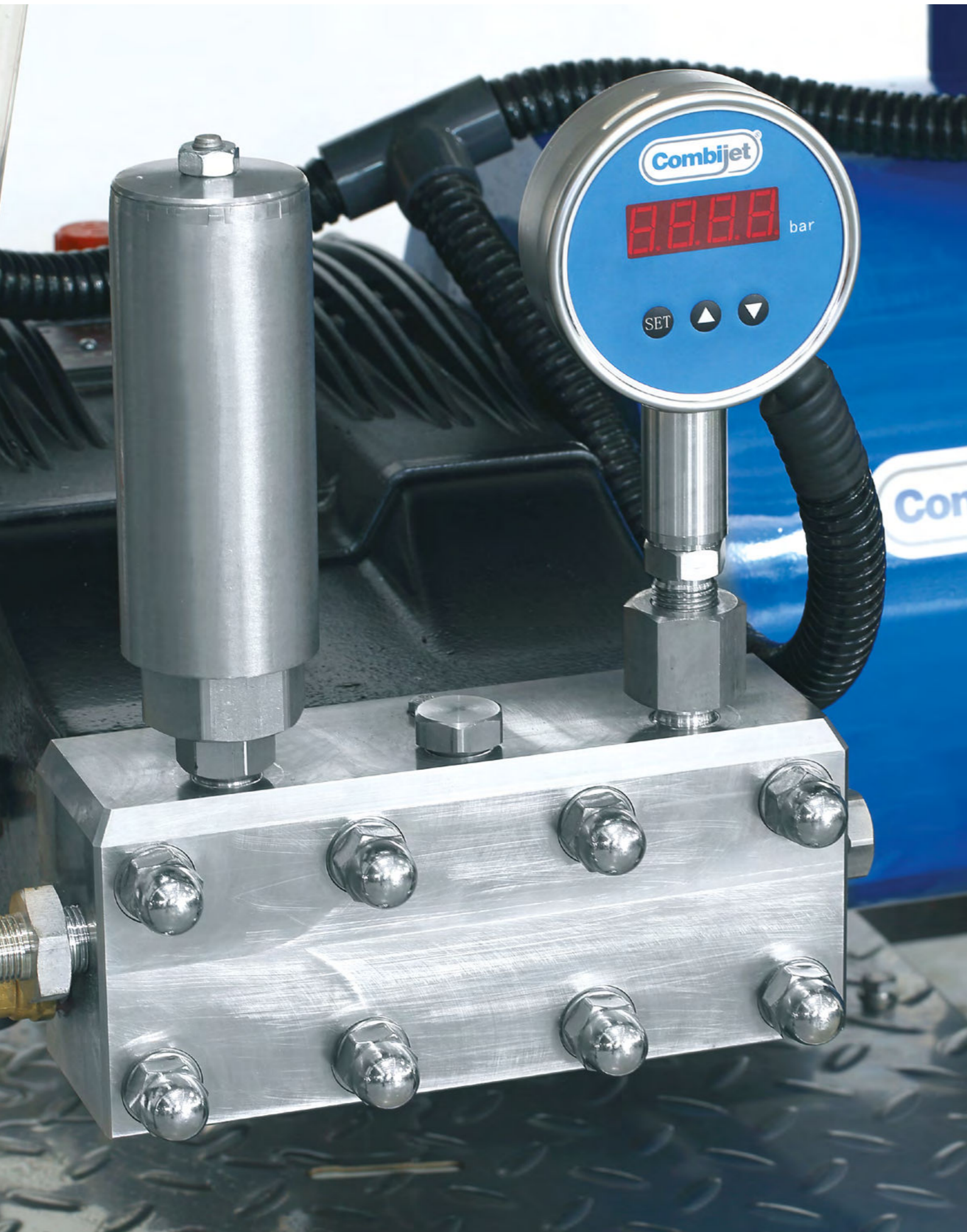
Repair kit - Rotating Nozzle



Repair Kits

Valves / Oil Seals / Water Seals / Regulator / Gun



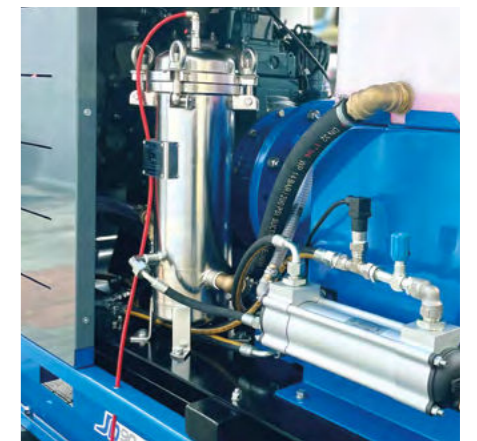


Water-jetting systems up to 1000 bar (up to 15,000 PSI)

The entry level to hydroblasting systems, our range of machines up to 1000 bar offer unparalleled performance for heavy cleaning and blasting works.

High-end components, combined with innovative designs and exceptional build quality, mean that the machines will perform even in the most demanding environments & conditions.

Highlights



ELECTRIC

High Pressure Water Blasters

Standard Equipment

- Ultra High Pressure Hose – 20m
- Electrical Cable – 5 m
- Dump Gun with Lance
- One Set of Operator & Spares Manual

Standard Features

- Stainless Steel Frame
- Stainless Steel SS316 Electric Box
- Stainless Steel SS316 Water Tank
- Lifting Eye
- Brake System
- Stainless Steel Filter
- Feed (Booster) Pump

Highlights



Working Pressure
Flow Rate
Voltage/Frequency
Electric Power
Dimensions LxWxH
Weight

JE80-800

800 Bar / 11600 PSI
15 lpm / 3.69 GPM
400V/50Hz or 440V/60Hz
430 kW / 40 HP
1700 x 980 x 1200 mm
750 Kg

JE80-1000

1000 Bar / 14500 PSI
15 lpm / 3.69 GPM
400V/50Hz or 440V/60Hz
30 kW / 40 HP
1700 x 980 x 1200 mm
750 Kg



ELECTRIC

High Pressure Water Blasters

Standard Equipment

- Ultra High Pressure Hose – 20m
- Electrical Cable
- Dump Gun with Lance
- One Set of Operator & Spares Manual

Standard Features

- Steel Base and Crash Frame, with lifting eyes and forklift pockets
- Water Tank
- Stainless Steel Filter
- Electric control panel, with Start/Stop and emergency shutdown functions
- Feed (booster) pump
- Pressure gauge
- Inlet water sensor (dry-run protection)



Working Pressure
Flow Rate
Voltage/Frequency
Electric Power
Dimensions LxWxH
Weight

JE80-1000/30

1000 Bar / 14.500 PSI
30 lpm / 7.9 GPM
400V/50Hz or 440V/60Hz
55-65 kW / 75-86 HP
2000 x 1750 x 1800 mm
1800 kg

JE80-1000/40

1000 Bar / 14.500 PSI
40 lpm / 10.5 GPM
400V/50Hz or 440V/60Hz
75-90 kW / 100-120 HP
2000 x 1750 x 1800 mm
2000 kg

JE80-1000/65

1000 Bar / 14.500 PSI
65 lpm / 17 GPM
400V/50Hz or 440V/60Hz
132 kW / 175 HP
2250 x 1850 x 1900 mm
2300 kg

JE80-1000/90

1000 Bar / 14.500 PSI
90 lpm / 24 GPM
400V/50Hz or 440V/60Hz
200 kW / 265 HP
3300 x 2600 x 2000 mm
3500 kg

Working Pressure
Flow Rate
Voltage/Frequency
Electric Power
Dimensions LxWxH
Weight

MOUNTING OPTIONS



- Soundproof / Weatherproof Enclosure
- Mobile Trailer on Wheels
- Container Setup (10ft / 20ft)



DIESEL

High Pressure Water Blasters


Standard Equipment

- Ultra High Pressure Hose – 20m
- Electrical Cable – 5 m
- Dump Gun with Lance
- One Set of Operator & Spares Manual

Standard Features

- Steel Base and Crash Frame, with lifting eyes and forklift pockets
- Water Tank
- Stainless Steel Filter
- Control panel, with Start/Stop and emergency shutdown functions
- Feed (booster) pump
- Pressure gauge
- Inlet water sensor (dry-run protection)





Optional:
Offshore Engine Setup
(Spark Arrester / Shutoff Valve)

Working Pressure
Flow Rate
Engine Power
Dimensions LxWxH
Weight

JD90-800

800 Bar / 11600 PSI
15 lpm / 3.69 GPM
40-45kW / 50-60 HP
2100 x 1100 x 1750 mm
1050 kg

JD90-1000

1000 Bar / 14500 PSI
15 lpm / 3.69 GPM
40-45kW / 50-60 HP
2100 x 1100 x 1750 mm
1050 kg

Working Pressure
Flow Rate
Engine Power
Dimensions LxWxH
Weight

JD90-800/25

800 bar / 11,600 PSI
25 lpm / 6.6 GPM
50-55 kW / 65-75 HP
2100 x 1100 x 1750 mm
1050 kg

JD90-1000/21

1000 Bar / 14.500 PSI
21 lpm / 5.5 GPM
50-55 kW / 65-75 HP
2100 x 1100 x 1750 mm
1050 kg

DIESEL

Ultra High Pressure Water Blasters

Standard Equipment

- 20m High Pressure Hose
- Trigger Operated Gun with Lance

Standard Features

- Steel Base and Crash Frame, with lifting eyes and forklift pockets
- Water Tank
- Stainless Steel Filter
- Control panel, with Start/Stop and emergency shutdown functions
- Feed (booster) pump
- Pressure gauge
- Inlet water sensor (dry-run protection)



Working Pressure
Flow Rate
Engine Power
Dimensions LxWxH
Weight

JD90-1000/30

1000 Bar / 14.500 PSI
30 lpm / 7.9 GPM
75 kW / 100 HP
2250 x 1750 x 1900 mm
2300 kg

JD90-1000/40

1000 Bar / 14.500 PSI
40 lpm / 10.5 GPM
100 kW / 135 HP
2250 x 1750 x 1900 mm
2300 kg

Working Pressure
Flow Rate
Engine Power
Dimensions LxWxH
Weight

JD90-1000/65

1000 Bar / 14.500 PSI
65 lpm / 17 GPM
150-160 kW / 200-215 HP
2250 x 1750 x 1900 mm
2700 kg

JD90-1000/90

1000 bar / 14,500 PSI
90 lpm / 24 GPM
225-250 kW / 300-335 HP
3300 x 2600 x 2000 mm
3500 kg

MOUNTING OPTIONS



- Soundproof / Weatherproof Enclosure
- Mobile Trailer on Wheels
- Container Setup (10ft / 20ft)

1000 bar

ACCESSORIES

COMBIJET® High Pressure Hose
20 m – 1250bar



COMBIJET® Dump-style Gun + Lance



Fan Jet Nozzle (For cleaning)

Straight Jet (0°) Nozzle (For cutting)



Orbital Jet Rotating Nozzle

A single point jet nozzle rotating in orbital motion
Ideal for de-rusting & de-scaling works



Ultra Impact Rotating Nozzle – 4 jets

A four jet nozzle head, rotating at high speed
Ideal for paint and fine rust removal



Wet Sandblasting Kit

The kit mixes the high pressure water with the abrasive/sand. Ideal for removal of paint and rust, back to bare metal



Foot Valve

For control of pressure on/off using the foot
Typically used during pipe and tube cleaning



Tube Cleaning Nozzles

Ideal for cleaning, unblocking and polishing tubes
Applications include head exchangers and industrial tube bundles
Fixed and Rotary designs for various tube diameters



ACCESSORIES

Deck Blaster

For hydro-blasting of floors and decks.
The setup is on wheels, where the operator navigates the tool over the surface, while arming/disarming the pressure by hand.
The hydroblasting is done by a rotating nozzle holder, enclosed within the body of the tool.



Two-Gun (Two-Operator) System

For using one high pressure pump with two operators. The systems balances the pressure and flow throughout the system, so operators can work independently without affecting each other



Pressure Regulating Valve

For pressure adjustment, manually by hand



Repair Kit

Orbital Rotating Nozzle | Dump Gun



Repair Parts for Ultra Impact Rotating Nozzle:

Cartridge / Wear Cap / Oil & Oil Syringe / Jet Nozzles



Two Stage Filtration System (30µ/5µ)

For additional filtration of water feed to the machine. The filter unit consists of a 30 micron 1st stage and a 5 micron 2nd stage



Inlet Filter Cartridge - 5µ

Inlet Filter Cartridge - 30µ



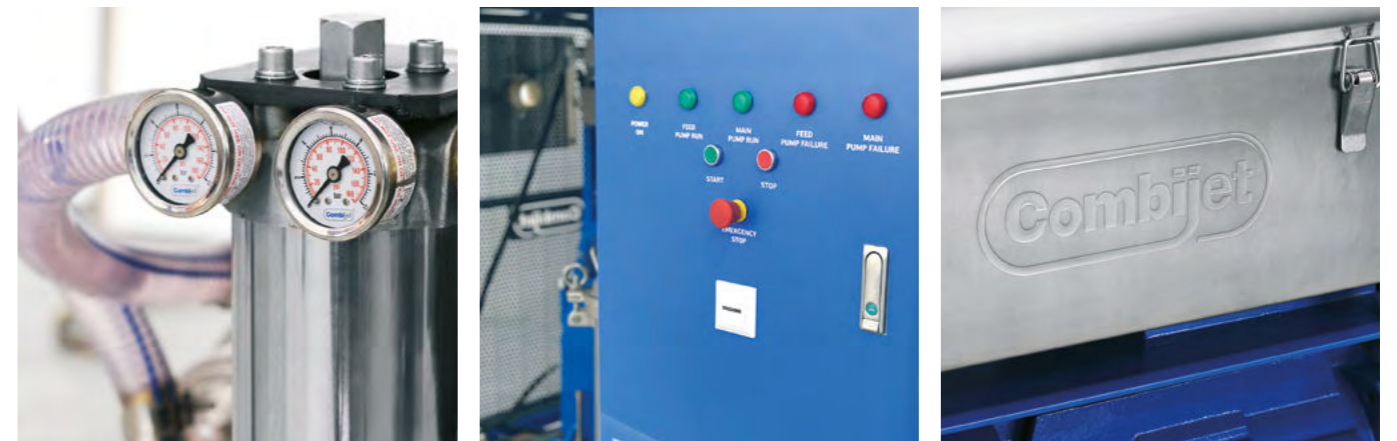
Water-jetting systems up to 1500 bar (up to 22,000 PSI)

Powerful, robust and built-to-last.

COMBIJET range of 1,500 bar hydroblasters is the first choice for contractors and service providers for ultimate productivity.

The machines in this class serve many applications, including blasting, surface preparation and heavy cleaning of concrete.

Highlights



ELECTRIC

High Pressure Water Blasters

Standard Equipment

- Ultra High Pressure Hose – 20m
- Electrical Cable – 5 m
- Dump Gun with Lance
- One Set of Operator & Spares Manual

Standard Features

- Stainless Steel AISI316 Frame
- Stainless Steel AISI316 Electric Box
- Stainless Steel AISI316 Water Tank
- Lifting Eye
- Brake System
- Stainless Steel Filter
- Feed (Booster) Pump

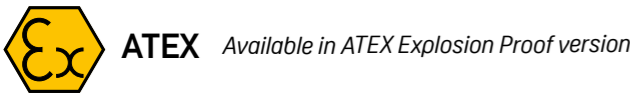


JE80-1500

JE80-1500/20

Working Pressure	1500 Bar / 21755 PSI
Flow Rate	13 lpm / 3.43 GPM
Voltage/Frequency	400V/50Hz or 440V/60Hz
Electric Power	37 kW / 50 HP
Dimensions LxWxH	1750 x 1000 x 1100 mm
Weight	750 Kg

Working Pressure	1500 Bar / 21755 PSI
Flow Rate	20 lpm / 5.28 GPM
Voltage/Frequency	400V/50Hz or 440V/60Hz
Electric Power	55-65 kW / 75-86 HP
Dimensions LxWxH	2000 x 1750 x 1800 mm
Weight	1250 kg



ELECTRIC

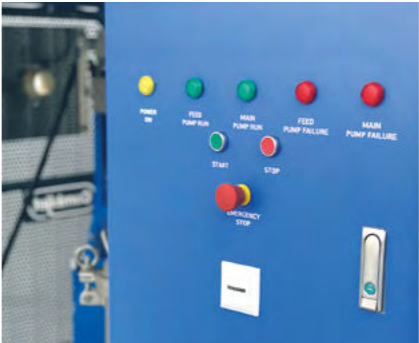
High Pressure Water Blasters

Standard Equipment

- Ultra High Pressure Hose – 20m
- Electrical Cable
- Dump Gun with Lance
- One Set of Operator & Spares Manual

Standard Features

- Steel Base and Crash Frame, with lifting eyes and forklift pockets
- Water Tank
- Stainless Steel Filter
- Electric control panel, with Start/Stop and emergency shutdown functions
- Feed (booster) pump
- Pressure gauge
- Inlet water sensor (dry-run protection)



JE80-1500/30

JE80-1500/45

Working Pressure	
Flow Rate	
Voltage/Frequency	
Electric Power	
Dimensions LxWxH	
Weight	

Working Pressure	1500 Bar / 21755 PSI
Flow Rate	30 lpm / 7.9 GPM
Voltage/Frequency	400V/50Hz or 440V/60Hz
Electric Power	90 kW / 120 HP
Dimensions LxWxH	2000 x 1750 x 1800 mm
Weight	2000 kg

Working Pressure	1500 Bar / 21755 PSI
Flow Rate	45 lpm / 11.9 GPM
Voltage/Frequency	400V/50Hz or 440V/60Hz
Electric Power	132 kW / 175 HP
Dimensions LxWxH	2250 x 1850 x 1900 mm
Weight	2300 kg

JE80-1500/55

JE80-1500/75

Working Pressure	
Flow Rate	
Voltage/Frequency	
Electric Power	
Dimensions LxWxH	
Weight	

Working Pressure	1500 Bar / 21755 PSI
Flow Rate	55 lpm / 14.5 GPM
Voltage/Frequency	400V/50Hz or 440V/60Hz
Electric Power	160 kW / 215 HP
Dimensions LxWxH	2500 x 1900 x 1900 mm
Weight	2750 kg

Working Pressure	1500 bar / 21755 PSI
Flow Rate	75 lpm / 19.8 GPM
Voltage/Frequency	400V/50Hz or 440V/60Hz
Electric Power	225 kW / 300 HP
Dimensions LxWxH	3300 x 2600 x 2000 mm
Weight	3500 kg

DIESEL

High Pressure Water Blasters

Standard Equipment

- Ultra High Pressure Hose – 20m
- Electrical Cable – 5 m
- Dump Gun with Lance
- One Set of Operator & Spares Manual

Standard Features

- Steel Base and Crash Frame, with lifting eyes and forklift pockets
- Water Tank
- Stainless Steel Filter
- Feed (booster) pump
- Control panel, with Start / Stop and emergency shutdown functions
- Pressure gauge
- Inlet water sensor (dry-run protection)



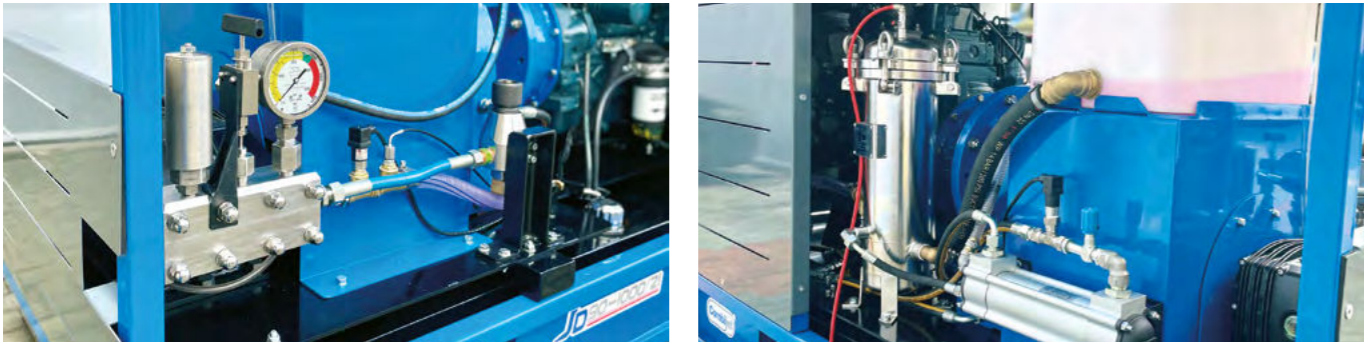
Optional:
Offshore Engine Setup
(Spark Arrester / Shutoff Valve)

JD90-1500

JD90-1500/20

Working Pressure	1500 Bar / 21755 PSI	1500 Bar / 21755 PSI
Flow Rate	14 lpm / 3.7 GPM	20 lpm / 5.28 GPM
Engine Power	50-55 kW / 65-75 HP	75-90 kW / 100-120 HP
Dimensions LxWxH	2100 x 1100 x 1750 mm	2250 x 1600 x 1900 mm
Weight	1050 kg	1750 kg

Highlights



DIESEL

Ultra High Pressure Water Blasters

Standard Equipment

- 20m High Pressure Hose
- Trigger Operated Gun with Lance

Standard Features

- Steel Base and Crash Frame, with lifting eyes and forklift pockets
- Water Tank
- Stainless Steel Filter
- Control panel, with Start/Stop and emergency shutdown functions
- Feed (booster) pump
- Pressure gauge
- Inlet water sensor (dry-run protection)



JD90-1500/30

JD90-1500/45

Working Pressure	1500 Bar / 21755 PSI	1500 Bar / 21755 PSI
Flow Rate	30 lpm / 7.9 GPM	45 lpm / 11.9 GPM
Engine Power	100 kW / 135 HP	150-160 kW / 200-215 HP
Dimensions LxWxH	2250 x 1750 x 1900 mm	2250 x 1750 x 1900 mm
Weight	2300 kg	2500 kg

JD90-1500/55

JD90-1500/75

Working Pressure	1500 Bar / 21755 PSI	1500 bar / 21,755 PSI
Flow Rate	55 lpm / 14.5 GPM	75 lpm / 19.8 GPM
Engine Power	180-190 kW / 240-255 HP	250 kW / 335 HP
Dimensions LxWxH	2500 x 1900 x 1900 mm	3300 x 2600 x 2000 mm
Weight	3000 kg	3500 kg

MOUNTING OPTIONS



- Soundproof / Weatherproof Enclosure
- Mobile Trailer on Wheels
- Container Setup (10ft / 20ft)



ACCESSORIES

COMBIJET® High Pressure Hose
20 m – 1250bar



COMBIJET® Dump-style Gun + Lance



Fan Jet Nozzle (For cleaning)
Straight Jet (0°) Nozzle (For cutting)



Orbital Jet Rotating Nozzle
A single point jet nozzle rotating in orbital motion
Ideal for de-rusting & de-scaling works



Ultra Impact Rotating Nozzle – 4 jets
A four jet nozzle head, rotating at high speed
Ideal for paint and fine rust removal



Wet Sandblasting Kit
The kit mixes the high pressure water with the abrasive/sand. Ideal for removal of paint and rust, back to bare metal



Foot Valve
For control of pressure on/off using the foot
Typically used during pipe and tube cleaning



Two-Gun (Two-Operator) System
For using one high pressure pump with two operators. The systems balances the pressure and flow throughout the system, so operators can work independently without affecting each other



Pressure Regulating Valve
For pressure adjustment, manually by hand



ACCESSORIES

Deck Blaster
For hydro-blasting of floors and decks.
The setup is on wheels, where the operator navigates the tool over the surface, while arming/disarming the pressure by hand.
The hydroblasting is done by a rotating nozzle holder, enclosed within the body of the tool.



Wet Abrasive Cutting Accessories
For cold-cutting applications of steel and concrete.
The tool combines the high pressure water with the abrasive material, to delivery high cutting force.
Various mounting options for the cutting head, including straight rail and circular rail for pipes.



Tube Cleaning Nozzles
Ideal for cleaning, unblocking and polishing tubes
Applications include head exchangers and industrial tube bundles
Fixed and Rotary designs for various tube diameters



Two Stage Filtration System (30µ/5µ)
For additional filtration of water feed to the machine.
The filter unit consists of a 30 micron 1st stage and a 5 micron 2nd stage



Repair Parts for Ultra Impact Rotating Nozzle:
Cartridge / Wear Cap / Oil & Oil Syringe / Jet Nozzles



Repair Kit
Dump Gun



Inlet Filter Cartridge - 5µ
Inlet Filter Cartridge - 30µ



Repair Kit
Orbital Rotating Nozzle



Water-jetting systems up to 2800 bar (up to 40,000 PSI)

The flagship of the range, our ultra high pressure water blasters are manufactured with three key aspects in mind:

RELIABILITY, SAFETY AND PERFORMANCE

With the latest pump and drive technologies, together with application engineering and innovative tools, the COMBIJET UHP systems are second-to-none.

Highlights



ELECTRIC

Ultra High Pressure Water Blasters

Standard Equipment

- Ultra High Pressure Hose - 20m
- Electrical Cable
- Dump Gun with Lance
- One Set of Operator & Spares Manual

Standard Features

- Steel Base and Crash Frame, with lifting eyes and forklift pockets
- Water Tank
- Stainless Steel Filter
- Control panel, with Start/Stop and emergency shutdown functions
- Feed (booster) pump
- Pressure gauge
- Inlet water sensor (dry-run protection)



MOUNTING OPTIONS

- Soundproof / Weatherproof Enclosure
- Mobile Trailer on Wheels
- Container Setup (10ft / 20ft)



Working Pressure
Flow Rate
Voltage/Frequency
Electric Power
Dimensions LxWxH / Weight

JE80-2100/17

2100 Bar / 30.458 PSI
17 lpm / 4.5 GPM
400V 50Hz or 440V 60Hz
75kW / 100 HP
2000 x 1750 x 1800 / 1800 kg

JE80-2100/22

2100 Bar / 30.458 PSI
22 lpm / 5.4 GPM
400V 50Hz or 440V 60Hz
90kW / 120 HP
2250 x 1750 x 1800 / 2000 kg

Working Pressure
Flow Rate
Voltage/Frequency
Electric Power
Dimensions LxWxH / Weight

JE80-2500/13

2,500 bar / 36,250 PSI
13 lpm / 3.4 GPM
400V 50Hz or 440V 60Hz
65 kW / 86 HP
2000 x 1750 x 1800 mm / 1800 kg

JE80-2500/17

2,500 bar / 36,250 PSI
17 lpm / 4.5 GPM
400V 50Hz or 440V 60Hz
90 kW / 120 HP
2250 x 1750 x 1800 mm / 2000 kg

JE80-2500/22

2500 Bar / 36,250 PSI
22 lpm / 5.8 GPM
400V 50Hz or 440V 60Hz
110 kW / 146 HP
2250 x 1750 x 1800 mm / 2200 kg

JE80-2500/32

2500 Bar / 36.259 PSI
32 lpm / 8.45 GPM
400V 50Hz or 440V 60Hz
160 kW / 215 HP
2250 x 1850 x 1900 mm / 2500 kg

JE80-2500/40

2500 Bar / 36,250 PSI
40 lpm / 10.5 GPM
400V 50Hz or 440V 60Hz
200kW / 265 HP
3000 x 2000 x 2000 mm / 3000 kg

Working Pressure
Flow Rate
Voltage/Frequency
Electric Power
Dimensions LxWxH / Weight

JE80-2800/13

2,760 bar / 40,000 PSI
13 lpm / 3.43 GPM
400V 50Hz or 440V 60Hz
75 kW / 100 HP
2000 x 1750 x 1800 mm / 1800 kg

JE80-2800/22

2,760 bar / 40,000 PSI
22 lpm / 5.8 GPM
400V 50Hz or 440V 60Hz
132 kW / 175 HP
2250 x 1850 x 1800 mm / 2300 kg

Working Pressure
Flow Rate
Voltage/Frequency
Electric Power
Dimensions LxWxH / Weight

JE80-2800/26

2800 Bar / 40.611 PSI
26 lpm / 6.9 GPM
400V 50Hz or 440V 60Hz
160 kW / 215 HP
2250 x 1850 x 1900 mm / 2500 kg

JE80-2800/40

2,760 bar / 40,000 PSI
40 lpm / 10.5 GPM
400V 50Hz or 440V 60Hz
250 kW / 335 HP
3300 x 2600 x 2000 mm / 3500 kg

Working Pressure
Flow Rate
Voltage/Frequency
Electric Power
Dimensions LxWxH / Weight

DIESEL

Ultra High Pressure Water Blasters

Standard Features

- Steel Base and Crash Frame, with lifting eyes and forklift pockets
- Water Tank
- Stainless Steel Filter
- Control panel, with Start/Stop and emergency shutdown functions
- Feed (booster) pump
- Pressure gauge
- Inlet water sensor (dry-run protection)



Optional:
Offshore Engine Setup
(Spark Arrester / Shutoff Valve)

Standard Equipment

- 20m High Pressure Hose
- Trigger Operated Gun with Lance



MOUNTING OPTIONS



- Soundproof / Weatherproof Enclosure
- Mobile Trailer on Wheels
- Container Setup (10ft / 20ft)



Working Pressure
Flow Rate
Engine Power
Dimensions LxWxH / Weight

JD90-2100/17

2100 Bar/30450 PSI
17 lpm / 4.5 GPM
100 kW / 135 HP
2000 x 1750 x 1800 mm / 2000 kg

JD90-2100/22

2100 Bar/30450 PSI
22 lpm / 5.8 GPM
100 kW / 135 HP
2000 x 1750 x 1800 mm / 2000 kg

Working Pressure
Flow Rate
Engine Power
Dimensions LxWxH / Weight

JD90-2500/13

2,500 bar / 36,250 PSI
30 lpm / 7.92 GPM
100kW / 135 HP
2000 x 1750 x 1900 mm / 2000 kg

JD90-2500/17

2,500 bar / 36,250 PSI
17 lpm / 4.5 GPM
100kW / 135 HP
2250 x 1750 x 1900 mm / 2300 kg

Working Pressure
Flow Rate
Engine Power
Dimensions LxWxH / Weight

JD90-2500/22

2,500 bar / 36,250 PSI
22 lpm / 5.8 GPM
150-160 kW / 200-215 HP
2250 x 1750 x 1900 mm / 2500 kg

JD90-2500/32

2,500 bar / 36,250 PSI
32 lpm / 8.45 GPM
180-190 kW / 240-255 HP
2500 x 1900 x 1900 mm / 3000 kg

Working Pressure
Flow Rate
Engine Power
Dimensions LxWxH / Weight

JD90-2500/40

2,500 bar / 36,250 PSI
40 lpm / 10.5 GPM
225-250 kW / 300-335 HP
3300 x 2600 x 2000 mm / 3500 kg

Working Pressure
Flow Rate
Engine Power
Dimensions LxWxH / Weight

JD90-2800/13

2,760 bar / 40,000 PSI
13 lpm / 3.43 GPM
100 kW / 135 HP
2250 x 1750 x 1900 mm / 2300 kg

JD90-2800/22

2800 Bar / 40.611 PSI
22 lpm / 5.8 GPM
150-160 kW / 200-215 HP
2250 x 1750 x 1900 mm / 2500 kg

Working Pressure
Flow Rate
Engine Power
Dimensions LxWxH / Weight

JD90-2800/26

JD90-2800/20
26 lpm / 6.8 GPM
180-190 kW / 240-255 HP
2500 x 1900 x 1900 mm / 3000 kg

JD90-2800/40

2800 Bar / 40.611 PSI
40 lpm / 10.5 GPM
225-250 kW / 300-335 HP
3300 x 2600 x 2000 mm / 3500 kg

ACCESSORIES

Ultra High Pressure Hose - 2500 bar
Standard length 20m, other lengths available on request



Ultra High Pressure Hose - 3000 bar
Standard length 20m, other lengths available on request



Ultra Impact Rotating Nozzle
with oil immersed-bearing system



Orbital Jet Rotating Nozzle
A single point jet nozzle rotating in orbital motion



Abrasive Injector (Wet Sandblasting) Kit
The kit mixes the high pressure water with the abrasive/sand. Ideal for removal of paint and rust, back to bare metal



Foot Valve
For control of pressure on/off using the foot
Typically used during pipe and tube cleaning



Pressure Load/Unload or Regulating Valves
For control of output pressure
Available in mechanical, pneumatic and electric versions



ACCESSORIES

Deck Blaster
For hydro-blasting of floors and decks.
The setup is on wheels, where the operator navigates the tool over the surface, while arming/disarming the pressure by hand.
The hydroblasting is done by a rotating nozzle holder, enclosed within the body of the tool.



Wet Abrasive Cutting Accessories
For cold-cutting applications of steel and concrete.
The tool combines the high pressure water with the abrasive material, to delivery high cutting force.
Various mounting options for the cutting head, including straight rail and circular rail for pipes.



Tube Cleaning Nozzles
Ideal for cleaning, unblocking and polishing tubes
Applications include head exchangers and industrial tube bundles
Fixed and Rotary designs for various tube diameters



Two-Gun (Two-Operator) System
For using one high pressure pump with two operators. The systems balances the pressure and flow throughout the system, so operators can work independently without affecting each other



Inlet Filter Cartridge - 5µ



Inlet Filter Cartridge - 30µ



Intrinsically Safe

(Explosion Proof / ATEX compliant)

200 bar up to 2800 bar
(2,900 PSI up to 40,000 PSI)



What is ATEX?

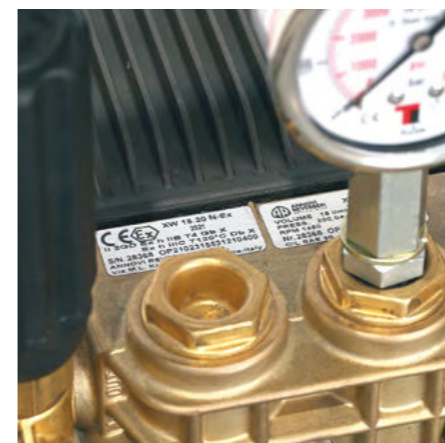
When certain amounts of flammable gases, mists, vapours or even dust clouds are mixed with the air around us, all they need is a source of ignition to cause an explosion. In order to prevent such an event, the European Union has laid out a set of directives to control working condition in such hazardous areas.

Explosion Proof Equipment

When operating in a hazardous environment, within an explosive atmosphere it is of outmost importance that the right equipment is being used. All our products are fully compliant to ATEX Zone 2, strictly following European guidelines and directives, with certified components.

Intrinsically Safe Applications

The COMBIJET ATEX compliant equipment are suitable for various applications, including seagoing vessels (tankers), offshore vessels and onshore oil & gas plants.



ATEX / Explosion Proof

High Pressure Washer
ATEX Zone 2 compliant

Standard Equipment

- Combijet HP Hose 20m with female ends BSP ½”
- Gun: Trigger operated gun
- Lance: 800mm length
- Nozzle: Fan Jet nozzle



JEX20-200/18

Working Pressure	200 bar / 2.900 PSI
Flow Rate	18 lpm / 4.75 GPM
Voltage/Frequency	400-440V / 50Hz-60Hz
Electric Power	7.5 kW / 10 HP
Dimensions	900 x 600 x 900 mm
Weight	95 kg

Standard features

- Explosion Proof Motor II2G EEx d(e) II CT4 IP55 3-PTC protection
- ATEX Certified Control Panel
- Flameproof Cable
- ATEX certified pump

ATEX / Explosion Proof

High Pressure Jet Cleaner
ATEX Zone 2 compliant

Standard Equipment

- Combijet HP Hose 20m with female ends BSP ½”
- Gun: Trigger operated gun
- Lance: 800mm length
- Nozzle: Fan Jet nozzle



JEX60-500

Working Pressure	500 bar / 7.250 PSI
Flow Rate	16 - 19 lpm / 4.2 - 5.0 GPM
Voltage/Frequency	400-440V / 50Hz-60H
Electric Power	15 kW / 20 HP
Dimensions	1290 x 870 x 1130 mm
Weight	390 Kg

Standard features

- Explosion Proof Motor II2G EEx d(e) II CT4 IP55 3-PTC protection
- ATEX Certified Control Panel
- Flameproof Cable
- ATEX certified pump

ATEX / Explosion Proof

High Pressure Water Blasters
ATEX Zone 2 compliant

Standard Equipment

- Combijet HP Hose 20m with female ends BSP ½”
- Gun: Trigger operated gun
- Lance: 800mm length



Standard features

- Explosion Proof Motor II2G EEx d(e) II CT4 IP55 3-PTC protection
- ATEX Certified Control Panel
- Flameproof Cable

Working Pressure
Flow Rate
Voltage/Frequency
Electric Power
Dimensions
Weight

JEX80-800

800 bar / 11.600 PSI
15 lpm / 3.96 GPM
400V 50Hz or 440V 60Hz
30 kW / 40 HP
1800 x 1200 x 1200 mm
950 Kg

JEX80-1000

1000 bar / 14.500 PSI
15 lpm / 3.96 GPM
400V 50Hz or 440V 60Hz
30 kW / 40 HP
1800 x 1200 x 1200 mm
950 Kg

JEX80-1500

1500 bar / 21.755 PSI
13 lpm / 3.43 GPM
400V 50Hz or 440V 60Hz
37 kW / 50 HP
1800 x 1200 x 1200 mm
1,100 Kg

JEX80-2500/17

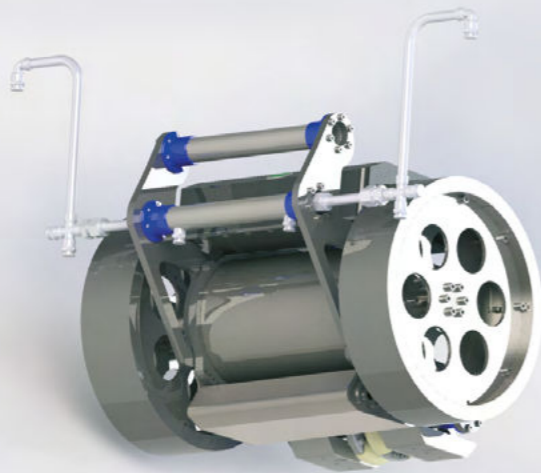
2,500 bar / 36,250 PSI
17 lpm / 4.5 GPM
400V 50Hz or 440V 60Hz
90 kW / 120 HP
2250 x 1750 x 1800 mm
2100 kg

JEX80-2500/22

2,500 bar / 36,250 PSI
22 lpm / 5.8 GPM
400V 50Hz or 440V 60Hz
110 kW / 146 HP
2250 x 1750 x 1800 mm
2300 kg

JEX80-2800/22

2,760 bar / 40,000 PSI
22 lpm / 5.8 GPM
400V 50Hz or 440V 60Hz
132 kW / 175 HP
2250 x 1850 x 1800 mm
2400 kg



XW 100

High Pressure Washing / Cargo Hold Cleaning Robot

Our state-of-the-art X-series washing robot for high pressure cleaning applications on flat steel surfaces.

Developed with the latest drive and control technologies, this magnetic crawler delivers high productivity and hassle-free operation.

The robot enables shipowners, crew members and service providers to thoroughly clean surfaces in faster, safer and environmentally friendly way, while keeping costs to a minimum.

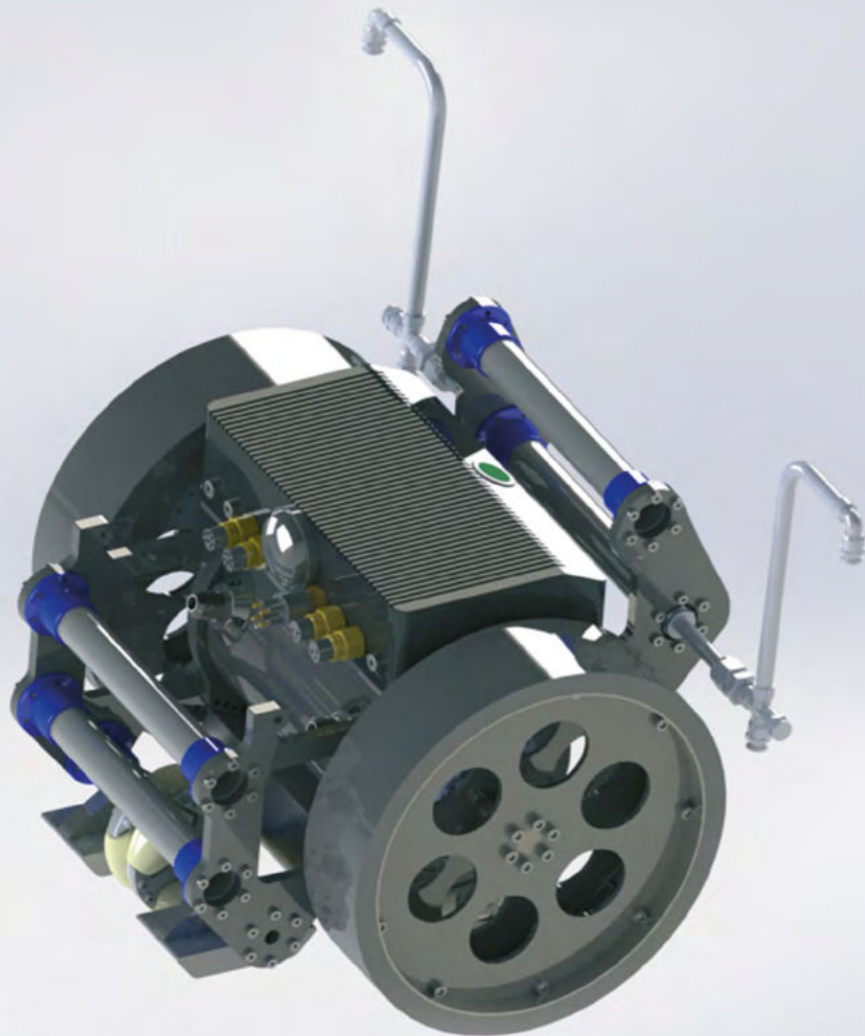
Due to the compact size, this robot can fit most applications, including various vessel cargo hold shapes and hard to reach areas.

The wireless remote control operation ensures that the operator is far from the work area, reducing injury risks and increasing safety.

Seamless and easy control reduces the physical work for the operator, resulting in higher productivity shifts.

Advantages:

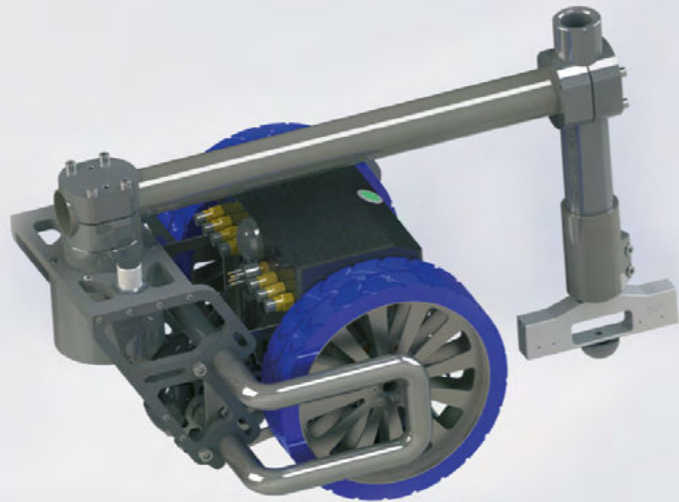
- High productivity and speed of work
- Thorough cleaning of surfaces
- Reduced setup and manpower requirements
- Increased safety due to operator remote control operation
- Eliminates requirement for access equipment (staging, scaffolding or cranes, platforms)
- The ability to work in close proximity to other maintenance processes



XW 100
Washing Robot

Dimensions (L x W x H)	420 x 475 x 465 mm
Weight	30 kg
Max. Drive Speed	Up to 12 meter / min
Power Supply	230V / 16A
Drive Motor Power	2 x 600W
IP Rating	IP69
Washing Productivity	Up to 350 sqm / hr*
Recommended Machine Sizes	500 bar @ 30-55 l/min 1000 bar @ 30 l/min

** Productivity depends on various factors, including machine pressure & flow-rate and surface condition*



XJ 300 / XV 300

Ultra High Pressure Water Blasting Robots

Our innovative X-series water blasting robots, for hydroblasting applications on flat steel surfaces.

Utilizing high-end components and the latest control technologies, our magnetic crawlers deliver high productivity and low-downtime operations.

The robots enable maintenance crews and service providers to carry out hydroblasting projects in a faster, safer and environmentally friendly way.

Available with a swing-arm for open type blasting or with a blast-can for enclosed blasting & vacuuming, the robots can be used in a multitude of applications.

The wireless remote control operation ensures that the operator is far from the work area, reducing injury risks and increasing safety.

Seamless and easy control reduces the physical work for the operator, resulting in higher productivity shifts.

Whether it's hydroblasting vessel hulls, storage tank structures or any flat steel surfaces, you can rely on COMBIJET robots to deliver.

Advantages:

- High productivity and speed of work
- Thorough cleaning of surfaces
- Reduced setup and manpower requirements
- Increased safety due to operator remote control operation
- Eliminates requirement for access equipment (staging, scaffolding or cranes, platforms)
- The ability to work in close proximity to other maintenance processes



XJ 300
Hydroblasting Robot

XV 300
Vacuum Robot

Robot Dimensions (L x W x H)	1100 x 475 x 465 mm	1,020 x 570 x 465 mm
Robot Weight	38 kg	57 kg
Max. Drive Speed	Up to 12 meter / min	Up to 12 meter / min
Max. Working Width	Up to 1500 mm	Up to 400 mm
Power Supply	230V / 16A	230V / 16A
Drive Motor Power	2 x 600W	2 x 600W
IP Rating	IP67	IP67
Recommended Machine Size	2500-2800 bar @ 30-40 l/min	2500-2800 bar @ 30-40 l/min





Modular Reverse Osmosis (Watermaker) Systems

Reverse Osmosis (RO) systems produce fresh water from sea water, using membrane technology.

The units are used in applications where fresh water availability is limited or sourcing fresh water is cost-prohibitive.

The COMBIJET reverse osmosis systems are modular in design, giving the flexibility to the customer to install them in locations where space might be an issue.

Our team of application and design engineers can assist you in your specific installation requirement and redesign the system based on space availability and limitations.

For seagoing and offshore vessels, another key advantage is the independence from the main engine running, as these systems are electrically driven and can be run 24/7, producing fresh water continuously.

Engineered to be easy-to-maintain, the running costs for the COMBIJET RO systems are economical in comparison to other water purification systems, with few parts and consumables required to keep the units in optimal condition.

Technical Water Systems

COMBIJET offers additional water purification systems that produce technical water quality, with an extreme low water salinity of 0-5 ppm.

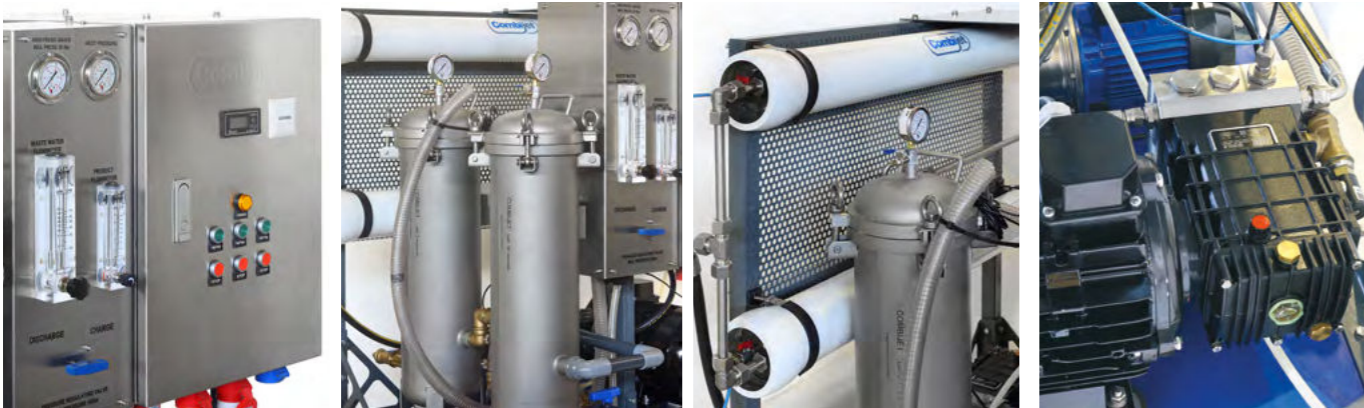
Applications include boilers and heating coils.

MODULAR REVERSE OSMOSIS

(Watermaker) Systems



Highlights



CRO 080

Max. System Electric Power	7.5 kW
Power Supply	400 - 440V / 50-60 Hz
Inlet Capacity (Seawater)	2.500 ltr/h
Max. Inlet Water Salinity	35.000ppm
Productivity (Fresh Water)	8 tons/day
Produced Water Salinity	Up to 500 ppm
Feed Water Temperature	25° C (Max. 35° C / Min. 5° C)
Dimensions	1320 x 900 x 1100 mm
Weight	300 kg

CRO 120

10 kW
400-440V / 50-60 Hz
3.600 ltr/h
35.000 ppm
12 tons/day
Up to 500 ppm
25° C (Max. 35° C / Min. 5° C)
1320 x 900 x 1100 mm
320 kg

CRO 200

Max. System Electric Power	15 kW
Power Supply	400 - 440V / 50-60 Hz
Inlet Capacity (Seawater)	7.200 ltr/h
Max. Inlet Water Salinity	35.000 ppm
Productivity (Fresh Water)	Up to 22 tons/day
Produced Water Salinity	Up to 500 ppm
Feed Water Temperature	25° C (Max. 35° C / Min. 5° C)
Dimensions	1320 x 1250 x 1100 mm
Weight	550 Kg

CRO 320

37 kW
400 - 440V / 50-60 Hz
18,000 ltr/h
35.000 ppm
Up to 32 tons/day
Up to 500 ppm
25 ° C (Max. 35° C / Min. 5° C)
1320 x 1450 x 1100 mm
700 kg

CRO 030

Max. System Electric Power	7.5 kW
Power Supply	400 - 440V / 50-60 Hz
Inlet Capacity (Seawater)	3,600 ltr/h
Max. Inlet Water Salinity	35,000 ppm
Productivity (Fresh Water)	3 tons/day
Produced Water Salinity	Up to 500 ppm
Feed Water Temperature	25o C (Max. 35o C / Min. 5o C)
Dimensions	900 x 800 x 900 mm
Weight	250 kg

CRO 050

7.5 kW
400 - 440V / 50-60 Hz
3,600 ltr/h
35,000 ppm
5 tons/day
Up to 500 ppm
25o C (Max. 35o C / Min. 5o C)
1320 x 900 x 900 mm
280 kg

CRO 500

Max. System Electric Power	37 kW
Power Supply	400 - 440V / 50-60 Hz
Inlet Capacity (Seawater)	21,000 ltr/h
Max. Inlet Water Salinity	35.000 ppm
Productivity (Fresh Water)	Up to 50 tons/day
Produced Water Salinity	Up to 500 ppm
Feed Water Temperature	25° C (Max.356 C / Min. 5° C)
Dimensions	1600x1500x1800 mm
Weight	750 Kg



Ultra High Pressure Thermoplastic Hoses

COMBIJET is a Certified Hose Assembly & Testing Center for Parker Polyflex Thermoplastic Hoses.

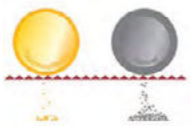
With a fully integrated hose assembly & testing workshop, we offer a full range of thermoplastic high pressure hoses, reaching pressures up to 4,000 bar (58,000 PSI).

Hose assemblies are crimped and tested in-house by our trained engineers, following thorough procedures & guidelines, with a hose test certificate issued for each production assembly.

Advantages of Thermoplastic Hoses:



- Extreme Temperature & Chemicals (Acid/Alkaline) Resistance



- Abrasion, UV & Seawater Resistance



- Compact Sizing & Lighter Weight



- Electrically Non-conductive & Isolating

Personal Protective Equipment

Up to 500 Bar



Protective Clothing

Overall with Hood. Protection level:
Rotary/Fan Jet – 500 bar
Straight Jet – 200 bar



Protective Apron

Protection level: Rotary/Fan Jet – 500 bar / Straight Jet – 200 bar



Hose Protection

Placed at the hose connection point to the gun, to protect the operator from hose burst or detachment



Protective Boots

Certified for 800 bar protection



Protective Gloves 500 bar



Helmet, with Polycarbonate Visor and Earmuffs

Ultra High Pressure up to 3000 Bar



Protective Suit 10/28

Trousers + Jacket incl. Hand Protection
Protection level: 1000bar straight jet / 2800bar rotary jet



Protective Apron 10/28

Protection level: 1000bar straight jet / 2800bar rotary jet



Hose Protection

For protection of the operator from hose detachment/burst. Placed at the hose connection point to the gun



Protective Gloves 500 bar

incl. Inner glove



Head Protection

(Helmet with Earmuffs and Visor)
Protection level: up to 3000 bar



Protective Gaiters

Worn outside the operators boots
Protection level: 2000 bar straight jet / 3000 bar rotary jet



Protective Suit 20/30

Trousers + Jacket incl. Hand Protection
Protection level: 2000bar straight jet / 3000bar rotary jet



Protective Apron 20/30

Protection level: 2000bar straight jet / 3000bar rotary jet



Protective Boots

Protection level: Up to 3000 bar



Whip Check / Hose Grip

Designed to prevent hose whip if the hose couplings or connector fails





Tailor-made Solutions

COMBIJET offers high pressure water jetting solutions, tailor-made to the application and requirements

- Wide range of working pressure and flow configurations
- Multiple machine mounting setups, including:
Stationary/Skid, Mobile Trailer, Soundproof Canopy or Containerized (10ft/20ft/40ft)
- Full range of Accessories and Attachments for various applications, including: Surface Cleaning, Blasting & Surface Preparation, Pipe/Tube Cleaning

Our application and design engineers are available to discuss your specific requirement or project needs, after which a technical sheet and drawing will be produced, before proceeding to manufacturing



Hydroblasting Services

Combijet Manufacturing and Dememarine Services offer custom made water blasting solutions for your surface preparation needs.

Using the innovative robotic equipment, we are able to carry out washing, hydroblasting and vacuum hydroblasting, whether it is on hulls, in cargo holds, on storage tanks or other. We take up the challenge to position our robots anywhere possible.

The products offer significant Water Blasting advantages over the traditional methods of sand blasting to remove marine growth, industrial coatings and corrosion.

- Ability to work simultaneously in close proximity to other trades or maintenance processes.
- Reduced manpower requirements and fast job delivery
- No Clean up costs
- No access requirements (staging, cranes, platforms, etc.)
- Fast, Safe, Clean and Efficient operation

Contact us to find more details about what we can offer

VACUUM CLEANERS

Standard Equipment for model CJV-265IF / CJV365IR

- Hose 2.5 m
- Steel Pipe & Curve
- Flat Lance
- Round Brush
- Holder Accessory
- Wet Tool
- Carpet Tool
- Tilted Tank
- Traceless wheels
- Cloth filter
- Stainless steel tank
- Filter cleaning system
- Handy accessory holder

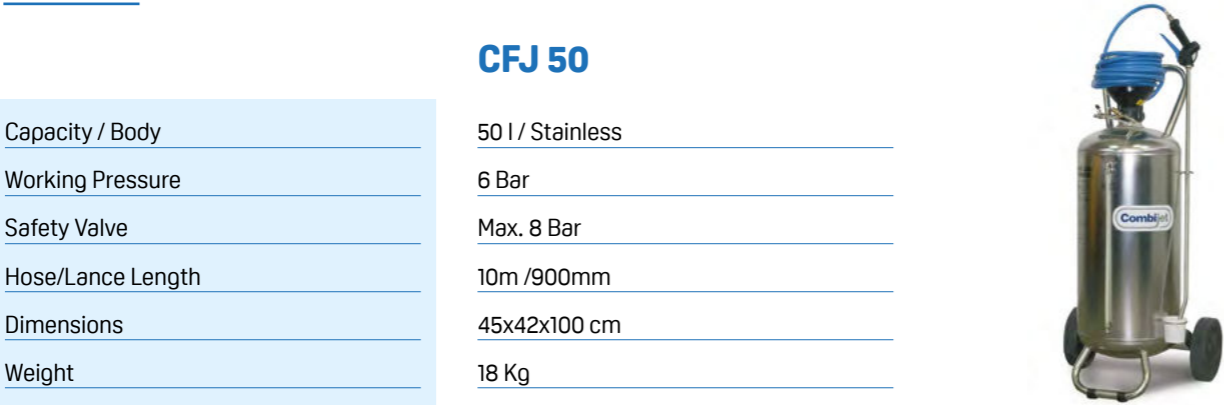
Motor Power	2000 (Mx. 2400)
Column Depression	220 mbar/22kPa
Suction Air	13 l/s
Tank Capacity	65 L
Power Supply	220 -240 50/60Hz
Dimensions / Weight	44x46x96 cm / 14.5 Kg

Power Supply	230V 50Hz
Abs. Power	2200 W
N° / Motor Type	1 x induction
Column Depression	32kPa (3200mm H2O)
Air Suction / Tank Volume	97 l/s / 80lt
Dust & Liquid Capacity	36 lt / 49 lt
Filtering Surface	4300 cm2
Filtering Capacity / Electr. Cable Length	5µm / 10m
Dimensions / Weight	50x50x140 cm / 80 Kg / 176 lbs

FOAM SPRAYER

Capacity / Body	50 l / Stainless
Working Pressure	6 Bar
Safety Valve	Max. 8 Bar
Hose/Lance Length	10m /900mm
Dimensions	45x42x100 cm
Weight	18 Kg

CFJ 50



CJL -365IR

3000 (Mx. 3600)
220mbar/22kPa
195 l/s
65 L
220 -240 50/60Hz
62x51x100 cm / 20 Kg

STEAM GENERATORS

Steam Generator with Diesel Boiler

Abs. Power/Voltage
Fuel/Water Tank
Burner Type
Fuel Consumption
Heating& Activation Time
Noise Level
Steam Production
Steam Pressure
Steam Temperature
Machine Dimensions / Weight

STEAM GENERATORS

Electric

Abs. Power/Voltage
Fuel/Water Tank
Burner Type
Fuel Consumption
Heating& Activation Time
Noise Level
Steam Production
Steam Pressure
Steam Temperature
Machine Dimensions / Weight



JS D10 (Single Operator)

350W / 230V
25/25 lt
DIESEL
3 lt /h
5 min
75 dB (A)
37.5 Kg /h
10 Bar
178 ° C
90x65x80 cm / 122 Kg

JS D10 (Tow Operators)

350 W/ 230 V
25 / 25 lt
DIESEL
3.78 lt/h
5 min
75dB (A)
47 Kg
10 Bar
178 ° C
90x65x80 cm / 140 Kg



JS 3000

3000 W / 230V 50Hz
ELECTRIC
4 - 7 min
73 dB (A)
3.25 kg/h
7 bar
165° C
630 X 540 X 880 mm / 32 kg / 70.5 lbs



JS 3.3

3.3 kW /230V 50Hz
5 l/ 5l
ELECTRIC
7-10 min
80dB(A)
4.62 Kg/h
9 Bar
175 ° C
620X440X860 CM / 340KG



T: +357 25755866 | F: +357 25725940

info@combijet.com | www.combijet.com



